

# PENGUIN SAFARI

\*Featuring baby chicks and seal pups



## SOUTH GEORGIA + ANTARCTIC PENINSULA



January 5, 2025 - January 23, 2025





# Overview

South Georgia and Antarctic Peninsula: Penguin Safari

---

The Antarctic and sub-Antarctic regions offer so many extraordinary things to see and do for adventurous travelers. **Any Antarctica trip includes multiple days in transit, which is why Wild Departures has selected room blocks where every guest has a balcony view from their suite. You won't miss a single moment or photo opportunity. We also depart in the heart of chick and pupping season to maximize images of the Southern Hemisphere's latest arrivals.**

The *South Georgia and Antarctica: Penguin Safari* itinerary is the fastest way to get to the rarely visited South Georgia Island while also stepping foot on the 7th Continent. Also, unlike many other Antarctica tours, we only ply the notorious waters of the Drake Passage once, on our way home, rather than round-trip.

As we set sail, we'll photograph massive albatross and beautiful pintado petrels as they soar around the ship, guiding us toward South Georgia. En route, we'll photograph breaching whales and their flukes set along the backdrop of massive bergs and ice floes. Upon arrival, we'll be greeted by **king penguins, fur seals, and elephant seals**. We'll spend time on capturing wide-angle shots to reflect the massive numbers of penguins gathered here, along with close ups, and unique angles. We'll look for jumping and swimming penguins to shoot as well. In Antarctica, we'll relax on Zodiac rides, hike to overlooks of glistening glaciers, and photograph **gentoo, macaroni, chinstrap, and Adélie** penguins. Those with GoPros can practice underwater photography from the Zodiacs. Antarctica will surprise and delight, and never disappoint.

As always, guests will bring home **gallery-worthy photos** with on-board and in-the-field instruction from a dedicated Wild Departures professional photographer.



## EXPEDITION IN BRIEF



See South Georgia's incredible wildlife, including 30 breeding bird species and four penguin species



Follow in the wake of Sir Ernest Shackleton's perilous voyages to South Georgia and pause for a moment at his grave site



Explore the Antarctic Peninsula by ship, Zodiac and foot



Learn about Antarctica's unique geology, history and wildlife with the ship's on-board lecturers



Immerse yourself in the icy realm of the Antarctic, with an optional paddling excursion



# Itinerary

---

## DAY 1 | ARRIVE IN USHUAIA, ARGENTINA

Our journey begins in Ushuaia, a small but bustling port at the tip of South America. It's the ideal gateway to explore the southern extent of Patagonia while preparing for the adventure ahead. Get active in the mountains or enjoy handcrafted chocolate at a café in town. We'll meet for dinner that night as a group to get acquainted and enjoy libations.

## DAY 3 | EMBARKATION DAY

Embarkation will occur in the late afternoon, after which our vessel will sail down the historic Beagle Channel, which transects the Tierra del Fuego archipelago in the extreme south of South America.

## DAYS 4-7 | AT SEA

There are many activities to keep us engaged at sea. Daily photography instruction and practice will prepare you for the big moments ahead. Get to know your equipment and go over tips and tricks to maximize composition and optimize success in variable shooting situations. We'll also be prepped on safety procedures for Zodiac cruises and shore landings, and be given instructions for getting the most out of the optional sea kayaking adventures (extra cost), a truly intimate way to experience Antarctica.

The first indication we're approaching South Georgia will be birds flying and roosting around a group of rocky spires called Shag Rocks. Have your binoculars and cameras ready to view and capture these formations jutting out from



## SOUTH GEORGIA & ANTARCTIC PENINSULA Penguin Safari

On board the *World Explorer*



the icy ocean waters. Shags and prions often rest here, and due to nutrient rich upwellings around the rocks it can be a good place to keep a lookout for whales.

#### DAYS 8 -10 | SOUTH GEORGIA

After enjoying South Georgia from a distance, we'll head toward its numerous beaches to find a bay for our first excursion. Landing sites are varied, largely determined by the weather conditions of our voyage. Get ready, because here, we'll enjoy wildlife encounters unrivaled anywhere else on earth.

South Georgia is one of the **most fertile breeding grounds in the world** for sub-Antarctic wildlife, with beaches **blanketed with penguins and seals**. We'll set out to view and photograph this birders' paradise, abundant with burrowing seabirds, albatross, and petrels. Of note, we'll spend time with king penguins, with their signature orange and yellow pops of color and towering presence.

In addition to king penguins, we'll endeavor to hang out with the mohawk-feathered Macaroni penguin, as well as the chinstrap and gentoo penguins, capturing and immersing ourselves in their behaviors.

But wait, there's more! Twenty-foot elephant seals and smaller fur seals haul out here, too.

South Georgia also offers us a history lesson. One of the most significant sites we'll visit on the island is Grytviken. This settlement was the first whaling station established in sub-Antarctic waters. It's also the site of the grave of Sir Ernest Shackleton, one of the most famous Antarctic explorers.

#### DAYS 11 -12 | AT SEA

After two days exploring South Georgia, our next destination is Antarctica! We'll fill our days at sea with photo editing tutorials and by making any gear or settings adjustments prior to our next landing.

#### DAYS 13-16 | ANTARCTIC

**PENINSULA** The most common reaction upon reaching the White Continent is a sense of reverence and awe. The experience is hard to put into words, since few places are as untouched and enduring as Antarctica.

Antarctica is a land of extremes: Isolation and silence are awakened by nature, as a calving glacier crashes into a brilliant blue sea or a penguin waddles by to inspect your footwear.

These close encounters provide unlimited opportunities to capture playful moments, color patterns, and engagement among the birds. We'll explore various angles and try for images taken from the Zodiac's as they leap from ice into the water.

Our ships' Expedition Team will take care of us on each excursion, whether we are Zodiac cruising, visiting a historical





site, or consorting with penguin colonies. Chinstrap, Adélie and gentoo penguins are found here, along with Weddell, fur, crabeater, and leopard seals. While on the Zodiacs, we'll keep a lookout for Antarctic whales, such as minke. Each day and each excursion will present a new collection of creatures to keep our cameras busy.

As exciting as the Zodiac excursions and landings are, the ship offers an optional paddling excursion (at an extra cost) or the unique opportunity to jump into Antarctic waters for the Polar Plunge. Bragging rights last the remainder of the year!

#### **DAYS 17-18 | CROSSING THE DRAKE PASSAGE**

After more than a dozen days of unique wildlife encounters and remarkable landscapes, our journey home begins. Crossing the Drake is an unofficial rite of passage. And, it will give us plenty of time to edit and review images, or spend time on deck watching for more seabirds and whales. A few more birds in flight and whale tail fluke images never hurt anyone.

#### **DAY 19 | DISEMBARK IN USHUAIA**

We arrive in Ushuaia in the morning, allowing you to continue your adventure onward or catch your flight home.

#### **EXPEDITION SPIRIT**

Embracing the unexpected is part of the legacy—and excitement—of expedition travel. When traveling in extremely remote regions, your ships' Expedition Team must consider the sea, ice, and weather to guide the route and itinerary details. This itinerary is a tentative outline of what you may experience on this voyage; please be aware that no specific itinerary can be guaranteed. By the same token, wildlife encounters as described are expected, but not guaranteed. The expertise of your crew and their knowledge of Antarctic and sub-Arctic habitats increase the probability of sightings.





## Possible Excursions

---

When traveling in extremely remote regions, we'll consider the sea, ice, and weather to guide the route and itinerary details. The following sites are a sample of what we may experience on our expedition, whether by ship, Zodiac cruise, or shore landing.

### South Georgia

#### DRYGALSKI FJORD

This is a photogenic and dramatic fjord, with sharp and jagged peaks rising out of the sea. Glaciation never reached the peaks, giving Drygalski its unique landscape.

#### GOLD HARBOUR

The backdrop to this harbor is the hanging Bertrab Glacier. **Thousands of king and gentoo penguins** call Gold Harbour home, as do rowdy elephant and fur seals.

#### GRYTVIKEN

Only a handful of people live, albeit temporarily, on South Georgia, a British overseas territory. Two of them are curators of the South Georgia Museum,

located in the former villa of the whaling station manager. The local church, built for the whaling community, is the only building in Grytviken still used for its original purpose. Buried in the church cemetery is one of Antarctica's most famous explorers, Sir Ernest Shackleton, at whose grave you can pay your respects.

#### SALISBURY PLAIN

One of the largest king penguin rookeries on South Georgia is located on Salisbury Plain. The Murphy and Lucas Glaciers flank the plain, creating a perfect backdrop for photos.

#### ST. ANDREW'S BAY

Over **150,000 breeding pairs of king penguins** nest at St. Andrew's Bay—the largest and fastest growing king penguin rookery on South Georgia, and a wildlife spectacle to behold.

#### STROMNESS

This abandoned whaling station was in full operation on the day in 1916 that Sir Ernest Shackleton and his companions staggered into it after a 36-hour trek across the island in an attempt to find





help for their shipmates stranded on Elephant Island. There is a small cemetery here which can be seen from a distance, with the graves of 14 whalers.

## Antarctic Peninsula

### BROWN BLUFF

A dormant volcano, Brown Bluff towers 2,225 feet (678 meters) over the **rookeries of Adélie and gentoo penguins, which number in the thousands.** These penguins will create a symphony of background noise while you explore the bluff.

### CIERVA COVE

If one of your expedition goals is to witness incredible icebergs and sea ice, Cierva Cove is the place for you. A massive glacial face regularly **calves into the bay**, and the floating ice can be quite spectacular. **Seals can be spotted on ice floes**, and later in the season, humpback whales occasionally feed in the icy waters.

### DANCO ISLAND

Home to **gentoo penguins**, this small dome-shaped island provides you with a stunning view of the Errera Channel.

### ENTERPRISE ISLAND

Located in Wilhelmina Bay, this island was once used by whalers. A Zodiac cruise exploring the island passes the rusting remains of a wrecked whaling ship, and provides opportunities to search for **humpback whales.**

### HOPE BAY

Three members of the Swedish Antarctic Expedition (1901-04) spent the winter in a hut on the shores of the bay. The hut is located close to the jetty of Esperanza Station, an Argentine research station.

### MELCHIOR ISLANDS

This group of low, glaciated islands in Dallmann Bay is where you may see **hauled-out male fur seals** as they recuperate from their battles for supremacy at the end of their breeding season.

### MIKKELSEN HARBOR

Located on the south side of Trinity Island, Mikkelsen Harbor is a 1.86-mile (3 km) wide bay surrounded by stunning ice cliffs. It was discovered by a Swedish Antarctic expedition in 1901–04, and is surrounded by several reefs. Keep your camera close, as **gentoo penguins and skuas, as well as Weddell, Antarctic fur, leopard and crabeater seals**, are often seen in the region.

### PARADISE BAY

Paradise Bay is a wide bay and natural harbor on the West Antarctic Peninsula. Mountains, glaciers and ice cliffs offer spectacular views. Icebergs regularly calve from the glaciers, providing a place for **seals, penguins and seabirds** to rest and play. An Argentine research base, Brown Base—named after Admiral Guillermo Brown, father of the Argentine Navy—is also located in Paradise Bay, and was operated from 1951 until it



burned down in 1984. It has since been partially rebuilt and is used as a summer research base.

#### PAULET ISLAND

Located in the northwestern Weddell Sea, Paulet Island is home to a **large Adélie penguin rookery**. With a volcanic cone that rises 1,158 feet (353 meters), the island reminds you that this was once a very active landscape. In addition to penguins, you may be interested in visiting a historic hut built by members of the Swedish Antarctic Expedition of 1901-04. A cross marks the grave site of Ole Wenersgaard, a member of the crew.

#### WILHELMINA BAY

**Humpback whales** abound in “Whale-mina Bay,” as it’s nicknamed, and the scenery is spectacular. Sheer cliffs and glaciers surround the calm waters of the protected bay, named after Wilhelmina, queen of the Netherlands from 1890 to 1948. If you’re lucky, you may see the

humpbacks **bubble-net feeding**: they exhale while swimming in a wide circle below the surface, trapping krill in a “net” of bubbles, and then swim straight up from below, mouths open, to engulf their prey. A truly astounding sight!

## South Shetland Islands

#### AITCHO ISLANDS

This group of small islands, some still unnamed, is situated in the northern entrance of the English Strait. You can often spot a great mix of wildlife in the area, with gentoo and chinstrap penguins having established rookeries on the islands. Southern elephant and fur seals frequently haul out here, too.

#### BAILY HEAD

Also known as Rancho Point, Bailey Head is a rocky headland on the southeastern shore of Deception Island. Chinstrap penguins build nests on slopes leading to a high ridge that forms a natural

amphitheater and provides a superb setting for landscape photography.

#### HALF MOON ISLAND

This crescent-shaped island was known to sealers as early as 1821. While they tried to keep this productive location secret, we’re happy to bring you ashore on this impressive island. Many Antarctic birds breed here, including chinstrap penguins, shags, Wilson’s storm petrels, kelp gulls, snowy sheathbills, Antarctic terns and skuas.





### PENDULUM COVE

Geothermal waters are found along the shoreline of this Deception Island cove, named for observations made on Earth's gravity using pendulums in 1829 by a British expedition. You may see steam rising from the shore and "cooked" krill floating on the surface due to the volcanically heated water.

### PENGUIN ISLAND

Antarctica has two flowering plants, both of which you can find on Penguin Island: Antarctic hair grass (*Deschampsia antarctica*) and Antarctic pearlwort (*Colobanthis quitensis*). Chinstrap penguins, fur seals and southern elephant seals can also be spotted here.

### ROBERT POINT

A beautiful spot for Zodiac cruising, this point was known to sealers as early as 1820. Chinstrap penguins, kelp gulls and pintado petrels breed here, and whales may be seen in the surrounding waters.

### TELEFON BAY

Your Expedition Team will be happy to point out that this is where the most recent evidence of volcanic eruption on Deception Island can be seen.

### TURRET POINT

Chinstrap and Adélie penguin rookeries are found on this point, situated on the south coast of King George Island. The beaches here are often crowded with **southern elephant, fur and Weddell seals** hauled out on the rocks.

### WHALER'S BAY

To reach Whaler's Bay, it is necessary to sail through a narrow passage called Neptune's Bellows. The bay was used by whalers from 1906 to 1931 and is part of a protected harbor created by the formation of the circular flooded caldera known as Deception Island. Along with waddling penguins and lounging seals, you'll see the rusting remains of whaling

operations on the beach. Watch for steam along the shoreline from geothermic activity when the tide is right.

### YANKEE HARBOUR

Gentoo penguins have established a rookery at this harbor, situated on the southwest side of Greenwich Island. Here, you can see an abandoned Argentine refuge hut and a large glacier that stretches along the east and north sides of the bay. An abandoned sealing try pot is all that remains of the activity that brought men thousands of miles in tall ships to seek their fortune. Enjoy a rare chance for a longer walk along the expansive beach, dotted with historical artifacts and wildlife.





# Your Ship

## WORLD EXPLORER

Polar powerhouse, the *World Explorer* ice-class ship —lets you discover everything Antarctica has to offer, with the type of service available only at premium hotels. The *World Explorer* also provides plenty of areas, both inside and out, to witness the incredible Antarctic wildlife or simply watch the world go by. Enjoy a spacious observation deck for taking in sights outdoors, an observation lounge with panoramic skyline views, a library for intimate relaxing and reading, and the Explorer Lounge for a drink and a chat. Presentations and discussions are held in a dedicated lecture theater. Health and wellness facilities feature an outdoor running track, small gym and spa, plus a heated outdoor swimming pool. With its new and environmentally sustainable hybrid technology and state-of-the-art Rolls-Royce engines and generators, the ship also boasts reduced fuel consumption and CO<sub>2</sub> emissions.

### SHIP SPECIFICATIONS:

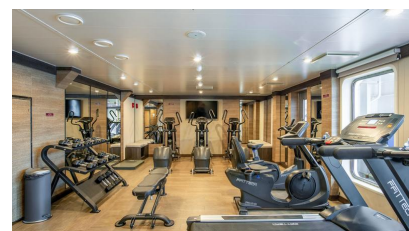
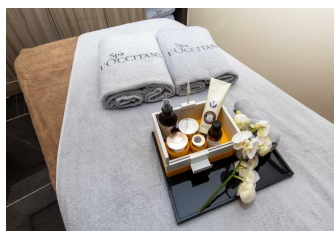
Staff & Crew: 125

Guests: 172

Lifeboats: 2, fully enclosed

Ice Class: 1B

*Wild Departures* rooms are Veranda or Infinity Suites with balconies.







# Meals on Board

---

If there is one constant on board, it is that you'll enjoy delicious meals daily. While meal times may change due to landings and wildlife encounters, you'll always be served three well-prepared meals per day. Most dietary restrictions can be accommodated by letting us know prior to your expedition.

Breakfasts and lunches are normally served buffet style, while dinners are served plated. À la carte meals are made at the time of your order, allowing our chefs to prepare each dish to your individual needs, ensuring you receive top-quality meals during the course of your expedition.

Soft drinks and juices are available during meals and when the bar is open; beer and wine are served with dinner; and coffee, tea and water stations are available around the clock - all included in the cost of your package. Spirits, premium wines and champagne are available at extra cost which can be billed to your shipboard account. The well-stocked bars on the ship are open to enjoy with your fellow shipmates in late morning, afternoon and evening.





## YOUR SUITE AWAITS

All Wild Departures guest accommodations are suites with balconies, ensuring quick access to photography and wildlife viewings. These suites are approximately 215 sq. ft. with 55 sq. ft. walk-out balconies. They have a sitting area, refrigerator, TV, and private bathroom with shower.



# Inclusions and Exclusions

## Inclusions

### RATES INCLUDE:

- Small group and private hands-on daily photography instruction, including photo editing.
- All Zodiac transfers and cruising as per the daily program.
- All shore landings as per the daily program.
- Shipboard accommodation with daily housekeeping.
- All meals, snacks, soft drinks and juices on board throughout your voyage (Please inform us of any dietary requirements as far in advance as possible. Unfortunately, the ships' galleys cannot prepare kosher meals.)
- Select beer and wine during dinner; and coffee, tea and cocoa available around the clock
- Formal and informal presentations by our Expedition Team and guest speakers as scheduled
- A pair of waterproof expedition boots on loan for landings and Zodiac cruising excursions
- **An expedition parka to keep.**
- **2 hotel nights on arrival in Ushuaia.**
- Hair dryer and bathrobes in every cabin
- All miscellaneous service taxes and port charges throughout the program
- All luggage handling aboard the ship
- **Emergency Evacuation insurance for all passengers to a maximum benefit of USD \$500,000 per person**
- Group transfer from hotel to ship on embarkation day.
- Group departure transfer upon disembarkation in Ushuaia from ship to local airport or to luggage storage facility.

## COSTS PER PERSON / SHARED ACCOMMODATIONS

\$27,200 total per person / double-occupancy

\$5,000 deposit due on or before 3/15/2024

## Exclusions

### RATES SPECIFICALLY DO NOT INCLUDE:

- International airfare
- Passport and applicable visa expenses
- Government arrival and departure taxes not mentioned
- Meals unless otherwise specified
- Personal bar tab
- Baggage, cancellation, interruption and medical travel insurance—strongly recommended
- Excess-baggage fees on international flights
- Mandatory waterproof pants for Zodiac landing and cruising excursions, or any other gear not mentioned
- Laundry, bar, spa services and other personal charges, unless specified
- Phone and Internet charges
- Voluntary gratuity at the end of the voyage for expedition staff and shipboard crew
- Additional overnight accommodation
- Arrival and departure transfers, except where explicitly stated
- Adventure Options not listed in Included Activities

**NOTE: TRAVEL INSURANCE IS REQUIRED FOR THIS TRIP. WE RECOMMEND TRAVEL GUARD/AIG.**





## Included Activities

---



Ready for a little adventure beyond your ship? Each voyage offers a variety of recreational activities to enhance your polar experience.

### ZODIAC CRUISING

Zodiacs are the workhorses of polar expeditions, taking you to places the ships can't access, allowing you to reach remote shorelines, explore shallow inlets and search for unique wildlife. Expedition staff make stepping in and

out of them safe and comfortable, and your Zodiac drivers will provide active interpretation, making the landscape come even more alive.

### HIKING

Hiking in Antarctica is free-form and supervised by our expert staff, who set out a perimeter or paths at each landing site within which you are free to explore. Go on your own, or shadow Wild Departures pro photographer, Michelle Theall, for hands-on, in-the-field instruction. Walking poles are provided at each landing for your convenience. As there are a limited number of poles available, please bring your own if you require them on every landing. Some landing sites will offer more demanding terrain options than others.

### PRESENTATIONS

Enjoy daily chats with and presentations by world-class on-board polar experts—guides, scientists, naturalists,

historians and other special guests who will introduce you to the fascinating history, biology, ornithology, and glaciology of the region, and much, much more.

### POLAR PLUNGE

This rite of passage, scheduled only once per expedition, gives you the chance to jump safely into the bracing Antarctic waters under the watchful eye of our staff—and just about every single camera on board!

### PHOTOGRAPHY

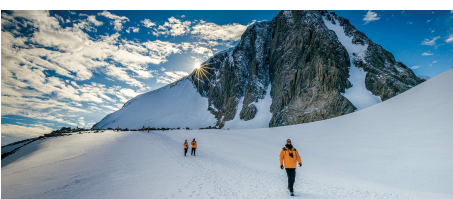
Documenting your voyage so you can take the memories home is a rewarding experience. While the ship offers some basic photography instruction, our group will have unlimited hands-on tutorials on the ship and in-the-field, including editing. A complimentary slideshow and photo archive of the tour will be provided for download following the excursion.

*Instruction will cover settings, composition, editing, and on-the-ground tips and tricks to bring home gallery-worthy images.*



# Adventure Options

---



## PLEASE NOTE

Pre-booking is required for all paid activities. We recommend booking early, as spaces fill quickly.

### **SEA KAYAKING**

Imagine gliding across the surface of a bay in the presence of icebergs and glaciers. Our Sea Kayaking program is a great way to intimately explore your surroundings. A small group of kayakers will plan to go out multiple times per voyage as an alternative to shore landings or Zodiac cruises. \$995+

The number of opportunities to kayak is weather dependent, and will be conducted only during calm conditions. Prior kayaking experience is required, and you must be able to do a wet exit to participate. Beginners interested in kayaking should consider participating in the Paddling Excursion.

### **PADDLING EXCURSION**

If you're interested in kayaking but would like to try something a bit less demanding than Sea Kayaking, you're the perfect candidate to sign up for a one-time paddle on our stable sit-on-top kayaks—perfect for anyone with

minimal or no kayaking experience. Small groups of passengers will be taken out on calm days, with our expert guides always present to provide instruction and help you connect with the polar sea. Two outings will be pre-booked, and once successfully completed, any subsequent outings will be offered via lottery on board. \$295+

### **STAND-UP PADDLEBOARDING**

Combining a surfboard with a kayak, stand-up paddleboarding will give you a very personal and unique perspective on Antarctica. Conducted in small groups—in calm bays and harbors, in good weather conditions—and accompanied by a safety Zodiac, one-time stand-up paddleboarding excursions can be pre-booked in two consecutive priority groups. After the first two successful outings, this activity will be offered via lottery on board the ship for any subsequent outings. \$295+





# Arrival and Departure Details

---

As you prepare for your journey, you may be interested in your arrival and departure details. Since international air transportation is not included in the cost of your expedition, you have some flexibility in planning your flights, and may decide to arrive early or depart later in order to explore other areas of Argentina. Wild Departures is available to help with logistical advice to navigate airports and transfers within Argentina.

## Arrival Day and Embarkation

### ARRIVING IN USHUAIA

You may arrive in Ushuaia at any time during Day 1 (January 5, 2025) of your itinerary. Ushuaia is a destination worth exploring, as is Tierra Del Fuego National Park. Wild Departures can suggest vendors for excursions.

A **pre-departure briefing** will take place in the lobby of the hotel in Ushuaia on **Day 2, at 6pm.**

### EMBARKATION IN USHUAIA

On the morning of Day 3, your luggage will be collected from the lobby of your hotel, transferred to the ship and stored in your cabin.

Ship embarkation will occur on **Day 3** of your itinerary, usually **around 4pm**. You and your shipmates will meet at a designated location near the pier, and board the waiting buses for transfer to the ship. Information about embarkation will be posted in your Ushuaia hotel and discussed during your pre-departure meeting on Day 2.

## Final Day and Departure

### DISEMBARKATION IN USHUAIA AND ONWARD

Your ship is scheduled to arrive at the pier in Ushuaia, usually between **7am and 8am**. Once the ship has docked, you will bid farewell to your ship's Expedition Team and shipmates before completing your disembarkation. The process takes about an hour.

Weather conditions can always change our arrival times, and airline schedule changes have also been known to occur in Argentina. Please book your flight home from Ushuaia to depart as late in the day as possible or the next day. If you have booked a flight that departs before 11am on the date that your expedition ends, you will be at risk of missing your flight.

We will reconfirm your domestic flight 48 hours prior to disembarkation, provided you give your information to our team ahead of time.

## Included Hotel Accommodations

Your included accommodation begins on Day 1 of your itinerary and includes 2 nights to give you time to arrive and account for any delays so that you do not miss your embarkation date.

Ushuaia accommodations trend toward mid-range properties, and hotel space is limited. We typically book at Hotel Las Lengas, Hotel Los Acebos, and Albatros Hotel.

## Arrival and Departure Transfers

### USHUAIA AIRPORT TRANSFERS

**ARRIVAL:** We can direct you to a reputable driver to pre-book your arrival transfer to the hotel.

**DEPARTURE:** A group departure transfer is included from the ship to the airport on the final day of your itinerary. If your flight is later in the day, you may opt to transfer to our luggage storage facility instead and enjoy further activities in Ushuaia on your own. Access to luggage storage is available until 6pm on the disembarkation day only. You will need to arrange your own transfer to the airport if you do not take advantage of the included transfer or if you are leaving Ushuaia after the disembarkation day.

*In order to facilitate your transfers, we request that you provide your flight details to Wild Departures at least 30 days prior to traveling.*





# Packing Checklist

## WEATHER CONDITIONS & TEMPERATURES

Polar weather is highly variable; temperatures may hover around the freezing mark and winds can be strong. The continuous daylight warms sheltered areas so that you may sometimes find it warm enough for t-shirts. However, you may also encounter snow squalls, fog and white-outs during an expedition so you should be ready for any conditions.

**WHAT TO BRING!** Packing for the polar regions doesn't have to be daunting, and to make it easier for you, we will provide an expedition parka to keep, and a loan of insulated waterproof boots. Additional suggested items include:

## FOR ALL EXCURSIONS

- ☐ Base layers (wool, synthetic or a blend)
- ☐ Mid-layer warm/fleece top
- ☐ Mid-layer warm/fleece pants
- ☐ Wool and synthetic socks (3 to 4 pairs)
- ☐ Neck warmer or balaclava
- ☐ Warm hat that covers ears
- ☐ Waterproof pants (mandatory for every Zodiac ride)
- ☐ Waterproof gloves and glove liners
- ☐ Sunscreen
- ☐ Sunglasses with UV protection
- ☐ Spare set of gloves

## SUGGESTED ITEMS

- ☐ Waterproof, lightweight backpack or dry sack
- ☐ Swimsuit (for the Polar Plunge or pool!)
- ☐ Binoculars
- ☐ Camera with charger and extra batteries
- ☐ Extra memory cards
- ☐ Earplugs
- ☐ Eye masks for sleeping
- ☐ Moisturizer and lip balm (polar air can be drying)
- ☐ Seasickness, indigestion, headache or other medicines as required
- ☐ Voltage converters and plug adapters (220V/European outlets)
- ☐ Ski goggles (for Zodiac cruising on snowy or windy days)

## FOR ON BOARD

- ☐ Comfortable casual clothing (pants/jeans, shirts, sweaters)
- ☐ Lighter shirts (in case the ship gets warm)
- ☐ Comfortable non-slip close-toed unheeled shoes (**NOTE:** Flip flops, sandals or slip-on shoes should not be worn on board due to safety concerns)

**NOTE: A separate photography gear packing sheet will be provided for all photographers!**